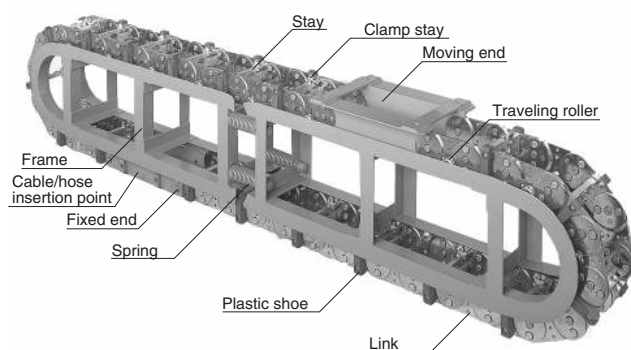


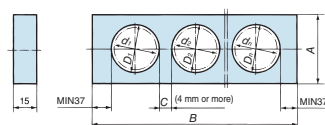
TKV130

Can be used for high speed/high frequency.

Structure



Stay dimensions

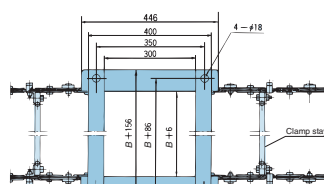
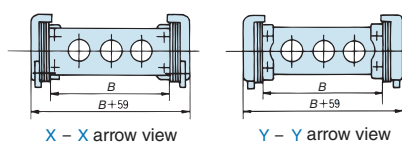
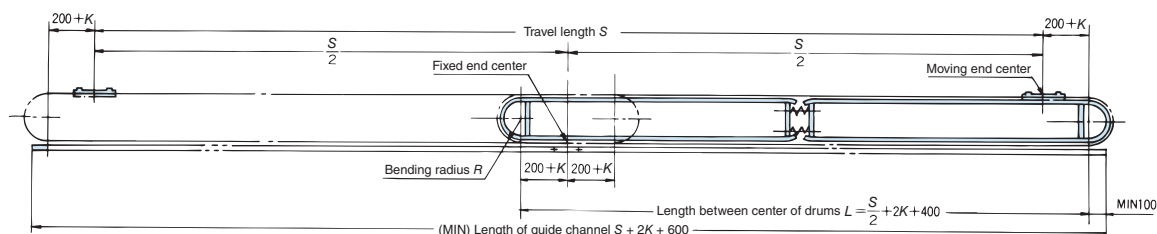


Cable/hose maximum outer diameter d (mm)	Stay height A (mm)
$\phi 46$	65
$\phi 55$	75
$\phi 60$	90

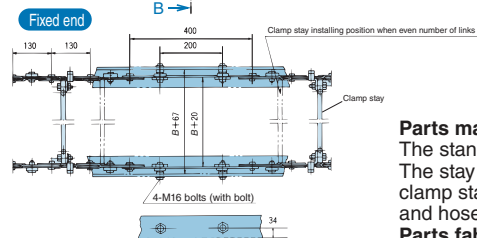
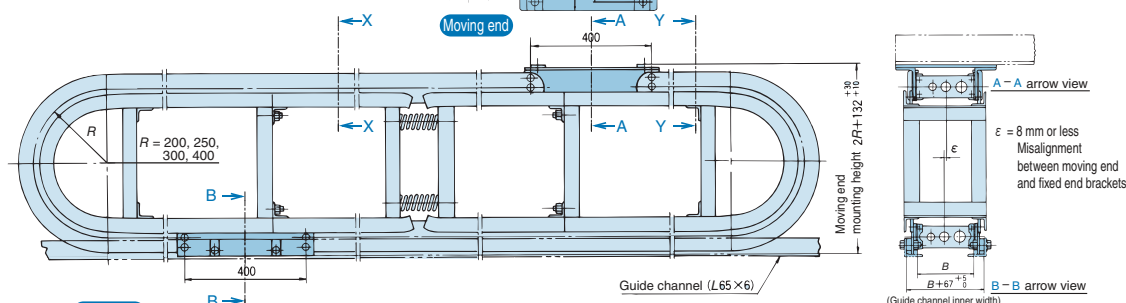
Bending radius R (mm)	Stay width B (mm)					
	150	200	250	300	350	400
200	○	○	○	○	○	○
250	-	○	○	○	○	○
300	-	-	○	○	○	○
400	-	-	-	○	○	○

Note: The B dimension can be also be manufactured at 400 and greater. Consult a Tsubaki representative for further information. (The stay width and height are manufactured at the ordered dimensions.)

Dimension drawings



Link pitch: 130 mm
Maximum travel length: 30 m
Maximum outer diameter of cable and hose: 60 mm
Maximum cable/hose mass: 50 kg/m



Parts manufactured by Tsubaki: Frames, links, stays (connecting plates)

The standard coating color is Munsell 2.5B6/2.

The stay on the moving end and fixed end both fasten the cables and hoses as clamp stays. Notify the Tsubaki representative of the actual outer diameter of cables and hoses.

Parts fabricated by the customer: Guide channels, connecting element for moving end bracket, terminal box

Basic specifications

Maximum travel speed (m/min)		150
Operating temperature range (°C)		-10 to 80
Materials	Chain	Steel
	Stay	Aluminum

Ordering information

Notes: 1. Discussions with a Tsubaki representative are necessary to select and order to the TKV Series. Contact a Tsubaki representative for further information.
2. In the TKV Series, a lightweight type (TKV095) is also available in addition to the TKV130.



PT. MASA JAYA PERKASA

M info@masajayaperkasa.com

**Jl. Hayam Wuruk No. 76,
Jakarta Barat, DKI Jakarta 11160**

(+62)21-649-6496

(+62)852-1116-7713